

## HALIFAX REGIONAL SCHOOL BOARD

### Site Selection Report Eastern District P-12 School

**PURPOSE:** To seek approval from the Governing Board to forward the recommendations from the Eastern District P-12 Site Selection Committee to the Department of Education and Early Childhood Development (“EECD”).

**BACKGROUND:** In December 2013 EECD approved a new Eastern District P-12 school to be constructed as a replacement school for Eastern Consolidated Elementary, Lakefront Consolidated Elementary, Sheet Harbour Consolidated Elementary and Duncan MacMillan High schools. EECD funding was allocated within the 2014-15 budget year for project start-up, including the site selection process.

Site selection is a process required by the Ministerial Education Act Regulations to determine where a new school will be constructed. Schools Boards are required to recommend three sites for construction. Upon announcement of a new school, the school board establishes a site selection committee to recommend three properties as potential school construction sites. For new schools that are replacing an existing school or multiple schools, one of the former school properties must be included as one of the recommended sites. The committee submits the recommendations to the Governing Board for approval.

If approved by the Governing Board, the committee recommendations are submitted to the EECD for further technical assessment by staff at the Department of Transportation and Infrastructure Renewal (“DTIR”). The Minister of Education and Early Childhood Development has final authority to approve the site.

**CONTENT:** The site selection committee for this new school included School Administration staff and School Advisory Council members from each of the four existing schools, as well as community members representing communities throughout the catchment area. The committee was chaired by Nancy O’Brien. Non-voting members included Governing Board member Bridget Boutilier as well as staff from HRSB, HRM, EECD and DTIR.

The Site Selection Committee Report is included as Appendix A, and includes a detailed description of the meetings and overall process, as well as three recommended sites.

**COST:** N/A

**FUNDING:** N/A

**TIMELINE:** The recommendations, if approved, will be forwarded to the EECD immediately in order to allow prompt assessment by DTIR. Depending on conditions of the sites, the assessment can take from 6 to 12 months or longer.

**APPENDICES:** Appendix A- Site Selection Committee Findings

**RECOMMENDATIONS:** It is recommended that the Governing Board submit the following sites to the Department of Education and Early Childhood Development for review and final approval:

- 1) Parcel of land including:
  - PID 00585455 Duncan MacMillan High School – 481 Church Point Rd., Sheet Harbour
  - PID 00585448 Sheet Harbour Consolidated Elementary – 479 Church Point Rd., Sheet Harbour
  - PID 00583989 property southeast of school properties – Church Point Rd., Sheet Harbour
- 2) PID 41183575 Highway #7 East of Sheet Harbour
- 3) PID 40220121 Highway # 7 in Sheet Harbour

**COMMUNICATIONS:**

AUDIENCE	RESPONSIBLE	TIMELINE
Principals in Duncan MacMillan family of schools	Director, School Administration	Following Board decision
Site Selection Committee	Director, Operations	Following Board decision
EECD Facilities Management	Director, Operations	Following Board decision

**From:** For further information please contact Ron Heiman,  
Director Operations Services  
Phone: 464-2000 ext 2144  
E-mail: [rheiman@hrsb.ca](mailto:rheiman@hrsb.ca) or

Jill McGillicuddy, Planner  
Phone: 464-2000 ext. 2277  
E-mail: [jmcgillicuddy@hrsb.ca](mailto:jmcgillicuddy@hrsb.ca)

**To:** Senior Staff: June 16, 2014  
Board: June 25, 2014

# **SITE SELECTION COMMITTEE FINDINGS**

## **Halifax Regional School Board**

### **Duncan MacMillan Family of Schools**



**Eastern Consolidated  
Lakefront Consolidated**



**Sheet Harbour Consolidated**

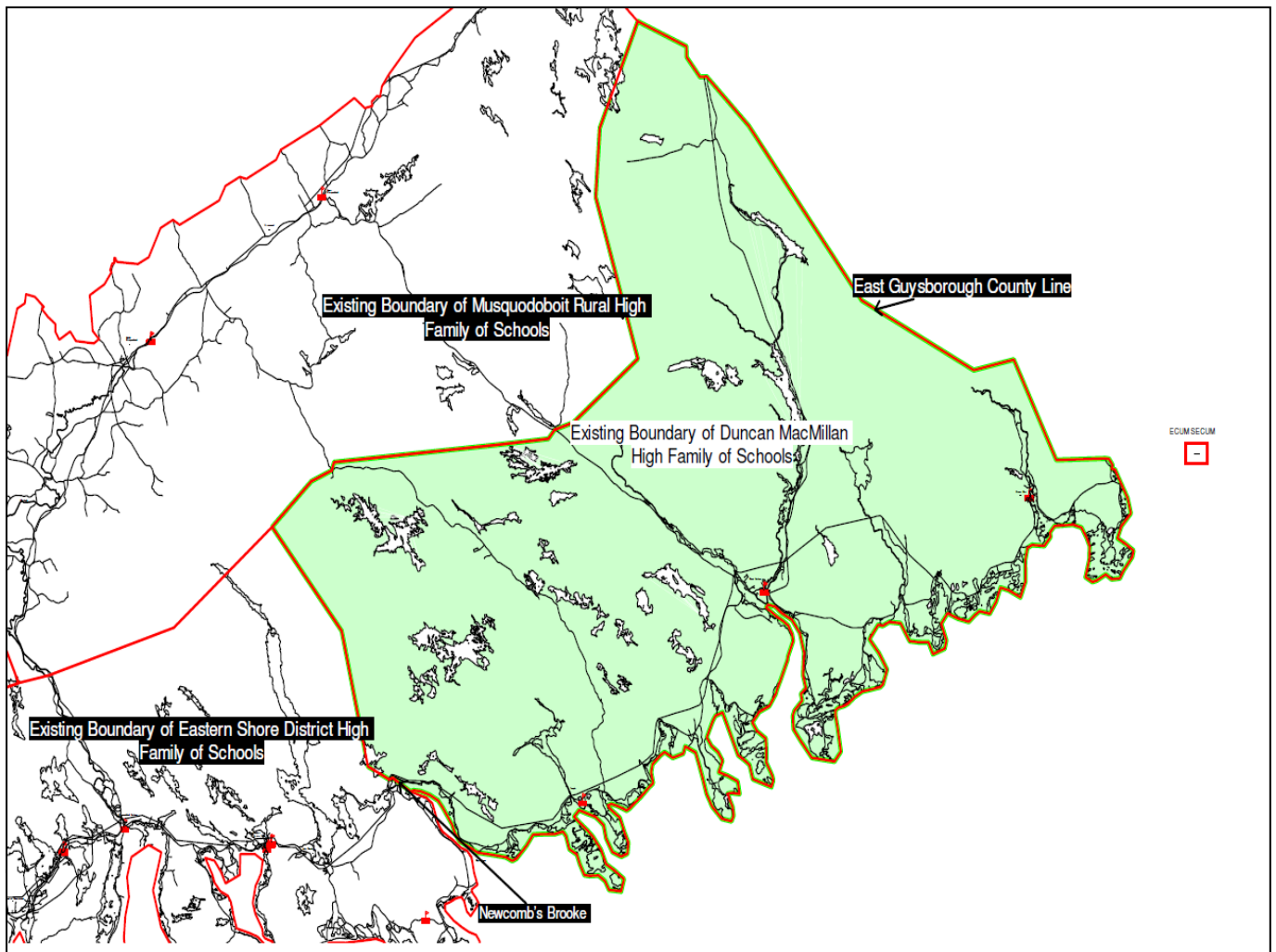


**Duncan MacMillan High**



## **FINAL REPORT – June 2014**

**Existing Boundary for Duncan MacMillan High Family of Schools**



## **Background**

The Department of Education and Early Childhood announced a new P-12 school on December 23<sup>rd</sup> 2013 for the Duncan MacMillan Family of Schools. The new school will welcome students presently attending Primary to Five at Eastern Consolidated, Moser River; Grades Primary to Six at Sheet Harbour Consolidated, Sheet Harbour; Grades Seven to Twelve attending Duncan MacMillan High School and Grades Primary to Six attending Lakefront Consolidated in Tangier.

## **Committee Membership**

Ms. Nancy O'Brien, Facilitator, HRSB

Mrs. Wanda Scott, Principal, Eastern Consolidated Elementary and Sheet Harbour Consolidated Elementary Schools

Mrs. Molly Gammon, Principal, Duncan MacMillan High School

Ms. Carole DesBarres, Principal, Lakefront Consolidated Elementary School

Mrs. Jennifer Lowe, Eastern Consolidated Elementary School SAC Chair

Mrs. Lisa Hutt, Sheet Harbour Consolidated Elementary School SAC Chair

Mrs. Jeannie Hubley, Duncan MacMillan High School SAC Chair

Mrs. Joy Josey, Lakefront Consolidated Elementary School SAC Chair

Mr. Jim Lowe, Eastern Consolidated Elementary School Community Member

Mr. Neil Parnell, Sheet Harbour Consolidated Elementary School and Duncan MacMillan High School Community Member

Mr. Mike MacKinley, Lakefront Consolidated Elementary School Community Member

Brandon Wambolt – Duncan MacMillan High School Student

Leah MacBain - Duncan MacMillan High School Student

### **Resource Staff**

Mr. Philip Cox – Senior Engineer, Nova Scotia Department of Transportation and Infrastructure

Mr. Ron Heiman – Director of Operation Services, HRSB Operations

Mrs. Maria Jacobs –Planner, HRM Planning and Infrastructure

Ms. Betty Lou Killen – Coordinator-Client Services, Community Development

Mr. Ron LeLievre – Regional Director of Facilities Management, NS Department of Education and Early Childhood Development

Mrs. Jill McGillicuddy – Planner, HRSB Operations

Mrs. Cathy Nearing – Business Process and Quality Improvement Lead, HRM Community and Recreation Services

Mr. Jeffery Pinhey – Consultant to Nova Scotia Department of Transportation and Infrastructure

### **Halifax Regional School Board**

Superintendent Mr. Elwin LeRoux

School Administration Supervisor Mrs. Stacey Toth

### **Governing Board Members**

Chair Mr. Gin Yee

Mrs. Bridget Boutilier

### **Site Selection Committee Activities**

The Site Selection Committee met on 7 occasions. The following is a report of the meetings with findings to be reported in the following section.

#### **Meeting #1 – Thursday, April 24, 2014 at Duncan MacMillan High School**

This was the first meeting of the Site Selection Committee. Facilitator Nancy O'Brien reviewed the committee's mandate to find and prioritize three sites for the replacement school and report their recommendation to the HRSB. Terms of Reference, Community Enhancement, Additional Site Selection Criteria and HRM Regional Plans were shared with the committee.

#### **Meeting #2 –Thursday, May, 1, 2014 at Lakefront Consolidated Elementary School**

During this meeting, the committee explored preliminary sites. Rating site rubric was introduced. Transportation and time lines were discussed.

#### **Meeting #3 – Monday, May 6 at Sheet Harbour Consolidated Elementary School**

The committee received additional information regarding site selection from Mr. Phil Cox, Senior Engineer, Transportation and Infrastructure Renewal, and Mr. Jeff Pinhey, Site Assessment Engineer. There was a great deal of discussion regarding the existing Duncan

location as a viable site. A site selection rating workshop was established. The committee decided to meet on Monday, May 12 to begin the process of inspecting potential sites for selection.

**Meeting # 4 - Monday, May 12, 2014 – Tour of Sites**

Several sites were visited. The committee was requested to forward additional sites to Chair Mrs. Nancy O’Brien prior to the next meeting scheduled for Monday, May 26 at Sheet Harbour Consolidated.

**Meeting # 5 – Monday, May 26 at Sheet Harbour Consolidated Elementary School & Tour of Sites**

The committee was provided with additional maps and a slide show of sites. Following a discussion of the sites, the committee proceeded to visit these six sites.

**Meeting #6 – Monday, June 2 at Lakefront Consolidated Elementary School -Voting**

Voting members voted on their top four sites by silent vote. The members then proceeded to identify opportunities and constraints for each site on chart paper. Members were concerned what would happen if one of the three recommended sites was eliminated. For this reason, the members proceeded to engage in four additional silent votes to ensure three sites would be presented.

**Meeting #7– Wednesday, June 11, 2014 at Duncan MacMillan High School**

Members edited the final report.

**Recommendations**

Based on group analysis and discussions, the committee is recommending the following three sites.

**Site # 1 – Existing Duncan MacMillan High and Sheet Harbour Consolidated Elementary Schools Property plus adjacent property**



Source: Stantec Consulting Limited

### Location and Site Characteristics

- Located on Church Point Road, Sheet Harbour
- Access from Church Point Road
- Lands owned by Halifax Regional Municipality and (PID 00585455, and 00585448 – Existing School sites)
- Land owned by Murphy McGregor (PID 00583989)
- PID 00585455 – 7.7 acres
- PID 00585448 – 4.1 acres
- PID 00583989 – 15 acres
- Only a portion of PID 00583989 may be required

### Opportunities

- Accessible
- No cost to buy land-owned by HRSB
- More money to spend on school as land is owned by HRSB

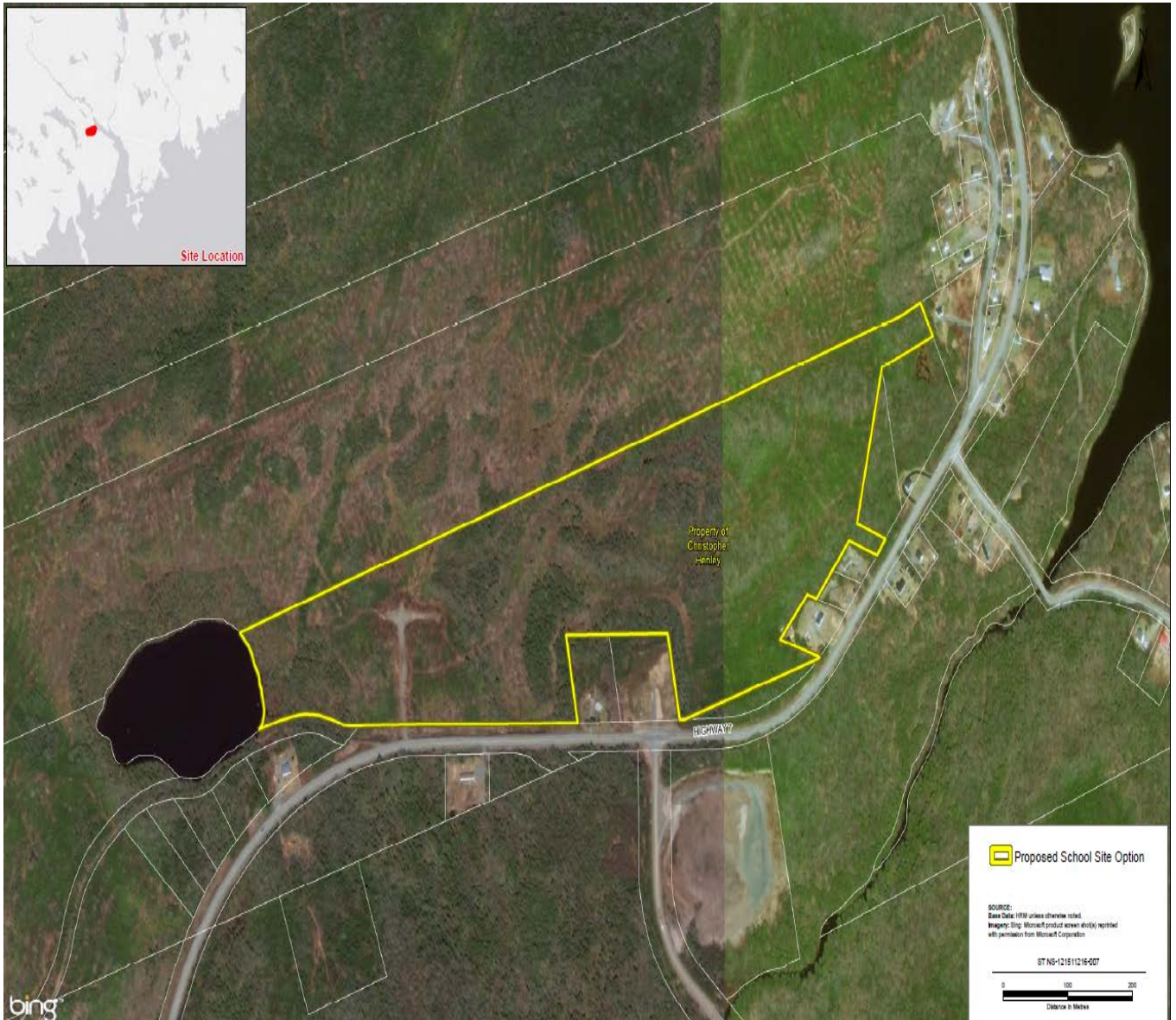
- Property is visible to allow monitoring and reduce risk of vandalism (Eyes on property)
- Proximity to cultural, community amenities
- Acreage allows for potential expansion/enhancement in the future
- Possibly more accepted by the communities
- Located in centre of catchment area
- Sidewalks available
- Close to new bridge enhancement with additional sidewalks
- Increased student accessibility to school/community extra curricular activities

### **Constraints**

- Logistics of potential school closure and removal to accommodate new construction
- Existing water problem on both Sheet Harbour Consolidated and Duncan MacMillan School sites
- Bus garage existed on school property site



## Site # 2 – Henley Property



Source: Stantec Consulting Limited

### Location and Site Characteristics

- Located on Highway 7, Sheet Harbour
- Access from Highway 7
- Lands owned by Christopher David Henley
- PID 41183575
- Lot Area – 49.48 acres
- Only a portion of the lot may be required

### Opportunities

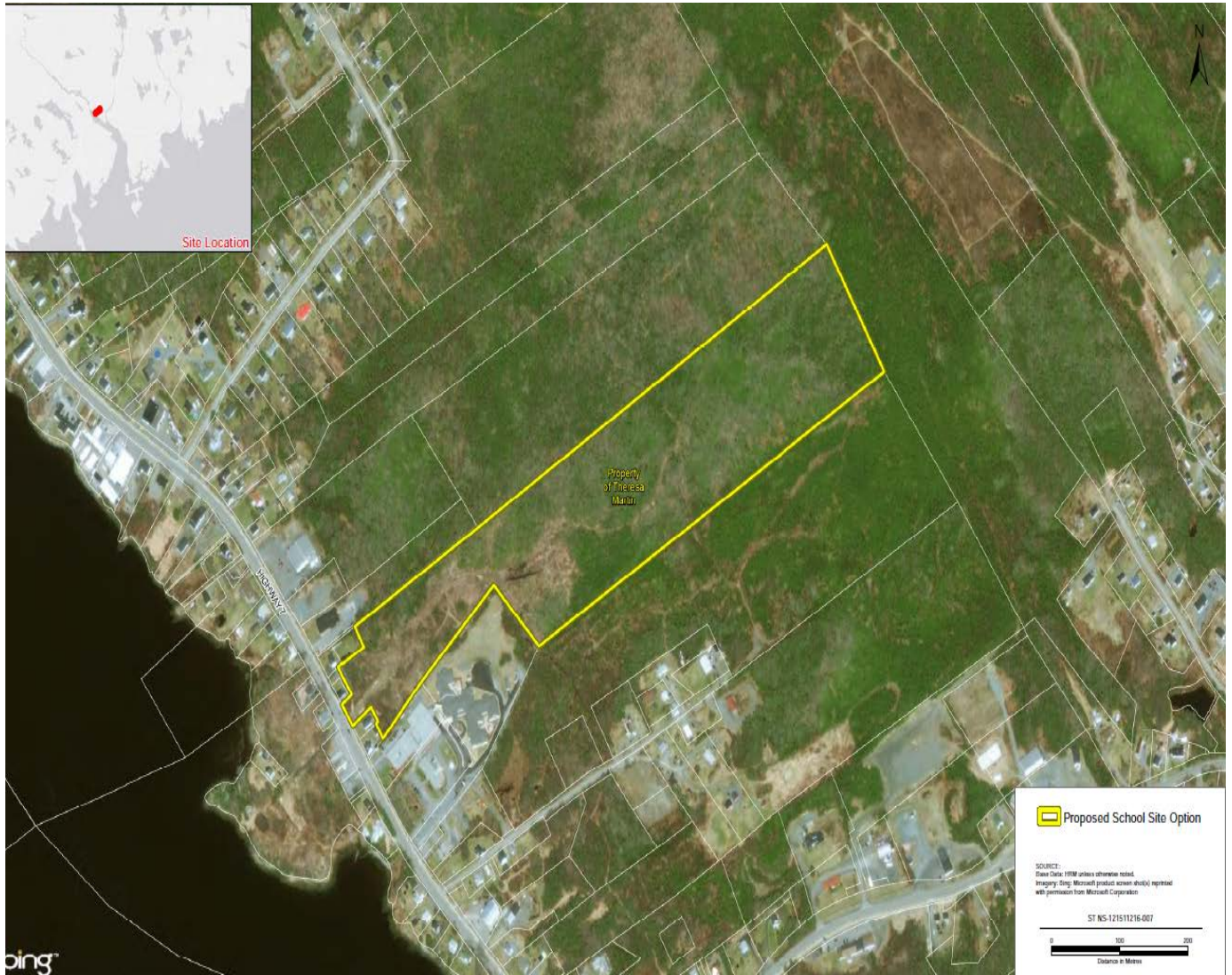
- Property is visible to allow monitoring and reduce risk of vandalism (Eyes on property)

- Property can accommodate two driveways
- Land has been recently cleared
- Approximately 5km away from Sheet Harbour Consolidated School
- Acreage allows for potential expansion/enhancement in the future

### **Constraints**

- Water problem: some swamp areas
- Curves in road may impact on visibility at driveway entrance
- Located on the number 7 highway
- Too far from centre for students east of the catchment area
- Sidewalks will need to be added
- Reduced student accessibility to school/community extracurricular activities
- Reduced proximity to cultural, community amenities

## Site # 3 – Martin Property



Source: Stantec Consulting Limited

### Location and Site Characteristics

- Located on Highway 7, Sheet Harbour
- Access from Highway 7
- Lands owned by Teresa Martin
- PID 40220121
- Lot Area – 28.84 acres

### Opportunities

- Central location
- Property is visible to allow monitoring and reduce risk of vandalism (Eye on property):

- Already a 50km speed zone
- Cleared land
- Acreage allows for potential expansion/enhancement in the future
- Closeness to Nursing Home

### **Constraints**

- Sidewalks needed
- Existing report indicated water issues in this area
- Closeness to Nursing home

## Appendix Section

Criteria /Priority Level	Site #1	Site #2	Site #3	Site #4	Site #5	Guidelines
Availability and Size (Level A)						Sidewalks in area and both sides of the site; room for expansion
Access to Site (Level A)						More than one access; not only on local roads but rather collector, no arterial or highway; 2 distinct driveways; inside or outside curves in the road can be dangerous
Center to the Community (Level A)						Surrounded by existing neighbourhoods
Current Topography/vegetation cover (Level A)						Flat vs. slope; amount of clearing required
Environmental Considerations (Level A)						Flooding; wetlands; slope; silt; smells; exposure to winds
Center of the Catchment Area (Level A)						Ideally central enough to even out distances for bus travel
Adjacent uses (Level B)						Mix uses – residential, commercial, institutional
CPTED (Level B)						Eyes on the site from all sides, most of the time
Proximity to cultural, community amenities (Level B)						Within 1 km of community meeting places, public spaces example: Sports fields, theatre, institutions

**Copy of Criteria for Site Selection Rating Worksheet**

**Copy used for collecting data on Site visits**

<b><u>Site One</u></b>	
<b><u>Site 2</u></b>	
<b><u>Site 3</u></b>	
<b><u>Site 4</u></b>	
<b><u>Site 5</u></b>	